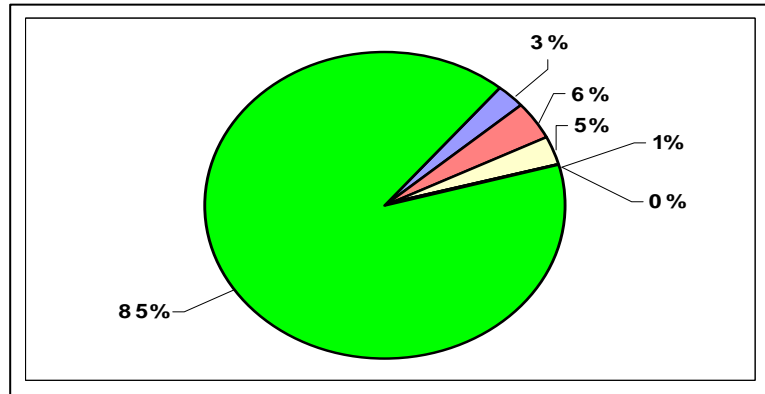


Revenue

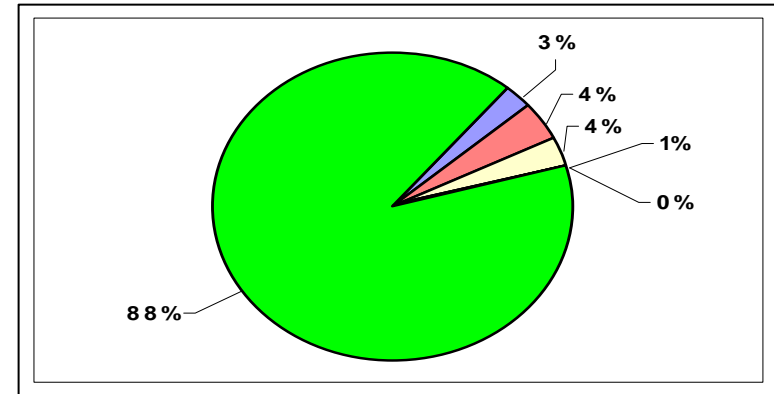


2010-11 BUDGET OF THE STAMFORD PUBLIC SCHOOLS TOTAL REVENUE BUDGET

2009-10



2010-11

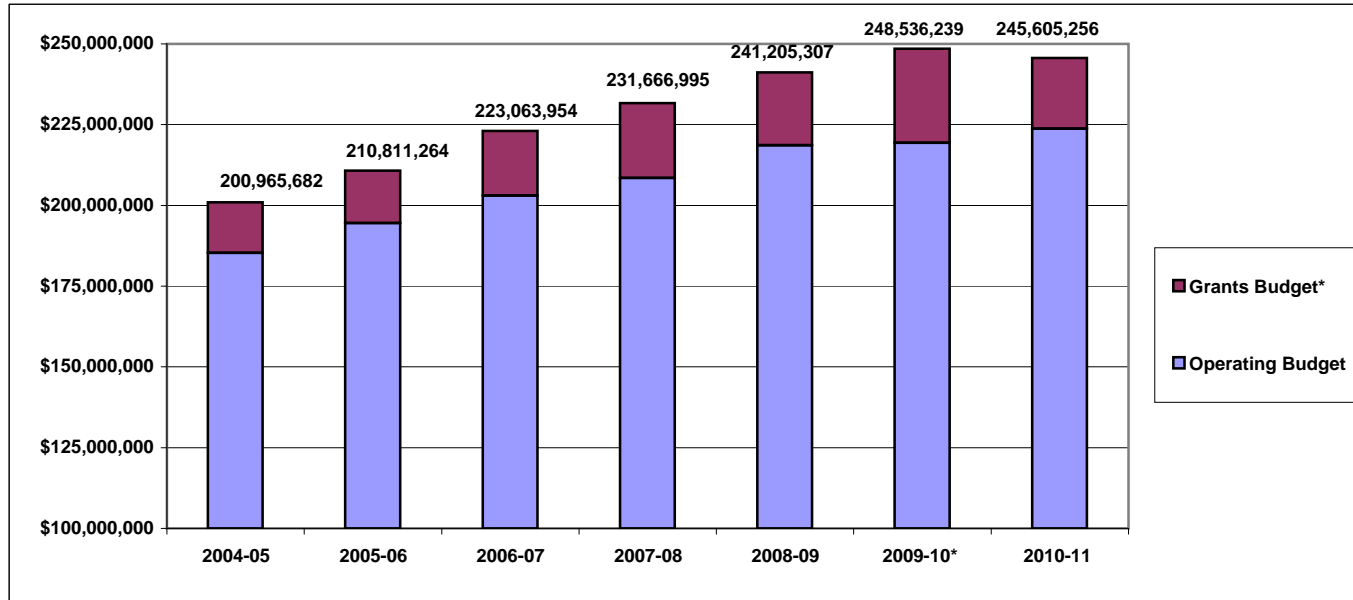


State Entitlements	7,794,129
Federal Grants	14,392,855 *
State Grants	10,999,703
Private Grants	3,735,535
Other Income	77,000
City of Stamford	211,537,017
Total Oper/Grant Budget	248,536,239

State Entitlements	7,794,129	3.2%
Federal Grants	8,825,476	3.6%
State Grants	10,863,923	4.4%
Private Grants	2,209,592	0.9%
Other Income	78,000	0.0%
City of Stamford	215,834,136	87.9%
Total Oper/Grant Budget	245,605,256	100.0%

*= includes Federal ARRA stimulus funding of \$5,300,230

2010-11 BUDGET OF THE STAMFORD PUBLIC SCHOOLS REVENUE BY SOURCE



	2004-05	2005-06	2006-07	2007-08	2008-09	2009-10*	2010-11
Operating Budget	185,265,181	194,527,805	203,056,708	208,532,549	218,609,176	219,408,146	223,706,265
Grants Budget*	15,700,501	16,283,459	20,007,246	23,134,446	22,596,131	29,128,093	21,898,991
Total	200,965,682	210,811,264	223,063,954	231,666,995	241,205,307	248,536,239	245,605,256

* = award amount as of budget printing date

**2010-11 BUDGET OF THE STAMFORD PUBLIC SCHOOLS
GENERAL FUND REVENUE TO CITY OF STAMFORD**

	Actual 2007-08	Actual 2008-09	Estimated 2009-10**	Estimated 2010-11**
REVENUE STATE OF CONNECTICUT				
Education Cost Sharing	7,302,455	7,345,570	7,552,108	7,552,108
Public Transportation	125,491	156,263	119,034	119,034
Non-Public Transportation	29,005	42,199	32,554	32,554
Special Education Equity				
Vocational Agriculture Operating Grant	116,886	94,762	90,433	90,433
TOTAL STATE REVENUE	\$7,573,837	\$7,638,794	\$7,794,129	\$7,794,129
OTHER REVENUE				
Tuitions	66,912	121,701	75,000	75,000
Miscellaneous	0	2,586	2,000	3,000
TOTAL OTHER REVENUE	\$66,912	\$124,287	\$77,000	\$78,000
TOTAL REVENUE	\$7,640,749	\$7,763,081	\$7,871,129	\$7,872,129
TOTAL OPERATING BUDGET	\$208,532,549	\$218,609,176	\$219,408,146	\$223,706,265
NET COST TO CITY	\$200,891,800	\$210,846,095	\$211,537,017	\$215,834,136

**= Latest Estimate based on best available information